



Aligning CLASS with Professional Development Through Communities of Practice

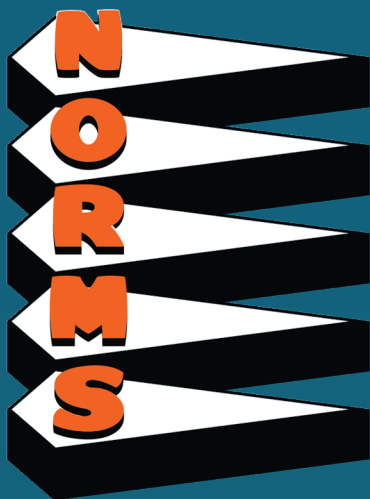
Melissa Wheelahan, M.A.
Program Specialist
Orange County Department of Education



Orange County Department of Education
Educational Services Division
Early Learning Services

Teachstone

#interactCLASSsummit



- Use Q & A box for questions. Rod is our monitor
- We will have a time for debrief at the end
- Stay connected, this will be an interactive training
- At the end I will share a google folder with all the resources

Teachstone

#interactCLASSsummit



Agenda

- 01** Where we have been
- 02** Where we are
- 03** What is a Community of Practice?
- 04** Mini CoP Experience

Quality Start OC CLASS Journey



2014–2015 (Under RTT-ELC)

- Built QRIS staff capacity through observer trainings and Train-the-Trainers
- Coached all classrooms using CLASS
- Provided Intro to CLASS training to all teachers

2015-2016 The Year of Plenty

- Built further QRIS staff knowledge through My Teaching Partner (MTP) and myTeachstone
- Continued to coach all classrooms using CLASS with an option for MTP or in-person coaching
- Gave access to myTeachstone to all lead teachers

Quality Start OC CLASS Journey



2016-2017

- Had a select few coaches trained in Making the Most of Classroom Interactions (MMCI)
- Moved to a fee-for-service coaching model and fee-for-service technical assistance for QRIS
- Continued Intro to CLASS trainings for new teachers

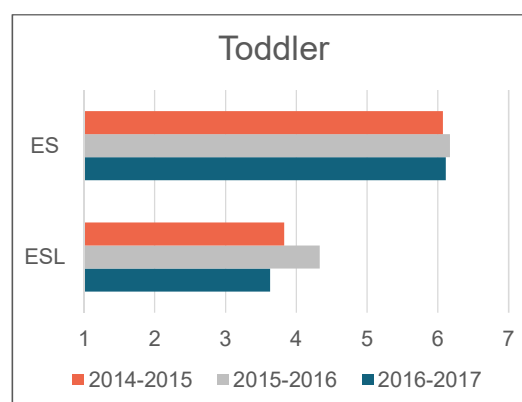
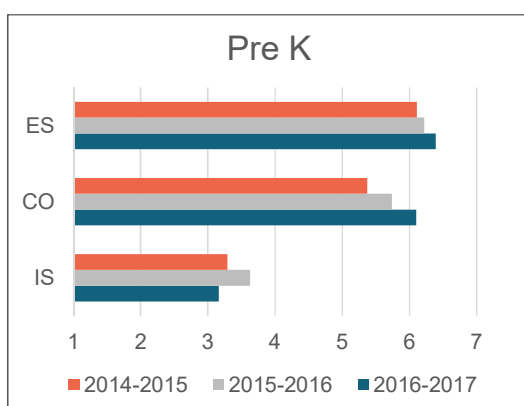
What we learned

- We saw a drop in CLASS assessment scores, except for the agencies that purchased fee-for-service coaching
- myTeachstone usage was low, we only offered access not follow-up
- MTP coaching strategies carried over into our coach's general approach and skillset



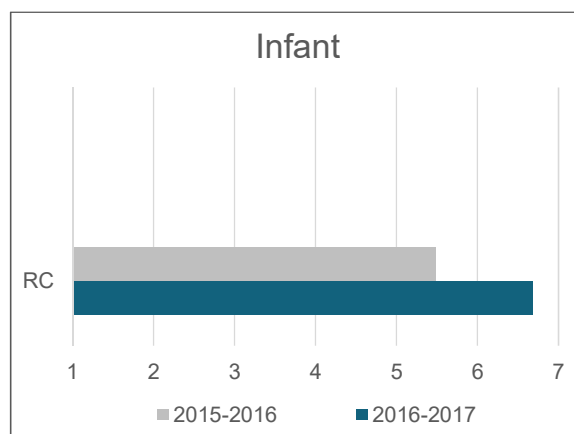
#interactCLASSsummit

CLASS Data - Pre Pathway

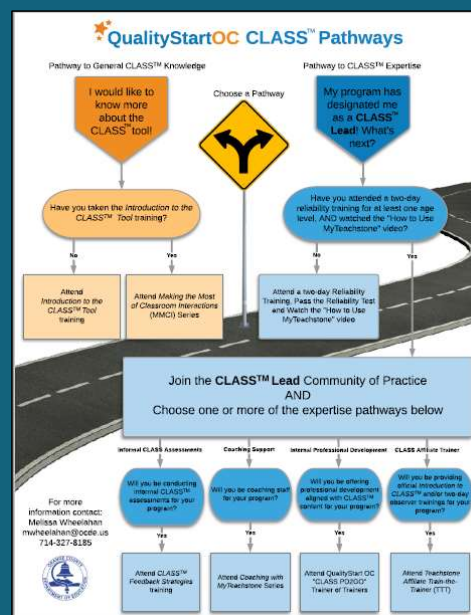


#interactCLASSsummit

CLASS Data - Pre Pathway



2017-2019 CLASS Pathway



2019-2020 CLASS Pathway

Orange County Department of Education
Educational Services Division
Early Learning Services

QUALITY START OC CLASS™ PATHWAY
2019-2020 PROFESSIONAL LEARNING OPPORTUNITIES



CLASS™ Community of Practice for Administrators

This CoP is for Directors and Site Supervisors. We will focus on how to best support your staff through observation, coaching, and training.

Orange County Department of Education

October 22, 2019
6:00 p.m. - 7:30 p.m.

January 9, 2020
6:30 p.m. - 8:00 p.m.

March 10, 2020
6:00 p.m. - 7:30 p.m.

May 14, 2020
6:30 p.m. - 8:00 p.m.

CLASS™ Community of Practice for Teachers

This CoP is for teaching staff with all levels of CLASS™ knowledge. We will focus on instructional strategies aligned with the CLASS™ tool.

Choose the location that best meets your needs

Garden Grove
10/29/19, 12/10/19, 2/4/20, 4/14/20

Costa Mesa
10/14/19, 12/9/19, 2/5/20, 4/6/20

Los Alamitos
10/10/19, 12/3/19, 2/6/20, 4/2/20

Mission Viejo
10/9/19, 12/11/19, 2/12/20, 4/8/20

Training to Support Adult-Child Interactions

These workshops are open to teachers and administrators. Choose the location that best meets your needs

Garden Grove
Hands-on Activities- 11/15/19
Preparing for your Visit- 1/23/20
Understanding Scores- 5/21/20

Costa Mesa
Hands-on Activities- 1/15/19
Preparing for your Visit- 1/13/20
Understanding Scores- 5/19/20

Los Alamitos
Hands-on Activities- 1/7/19
Preparing for your Visit- 1/16/20
Understanding Scores- 5/6/20

Mission Viejo
Hands-on Activities- 1/16/19
Preparing for your Visit- 1/15/20
Understanding Scores- 5/6/20

Registration and event details: Registration flyers with exact times and locations will be sent out prior to the training/CoP start date. All dates are subject to change.
Supports LCAP, Pupil Outcomes, and LCAP Priority (8), Other Pupil Outcomes

09051943178

The Data Tells the Story

PreK	2017-2018 Non-Pathway Score	2017-2018 Pathway Score
Emotional Support	6.3	6.4
Classroom Organization	5.9	6.1
Instructional Support	2.8	2.9

PreK	2018-19 Non-Pathway Score	2018-19 Pathway Score
Emotional Support	6.4	6.4
Classroom Organization	6.1	6.3
Instructional Support	3.2	3.4

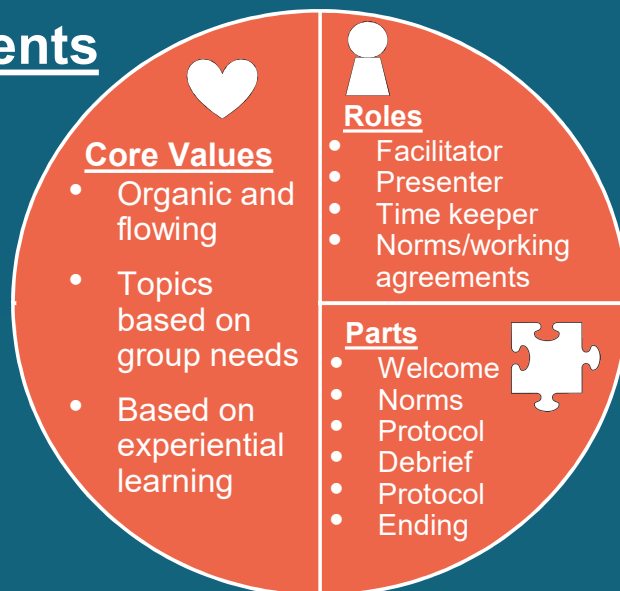
Building Community and Capacity through Communities of Practice

Communities of Practice are groups of people who share a common interest or passion and come together to learn from each other and work together to make sense of and address challenges they face collectively or individually.



Objectives and Components

- Attain new knowledge from the collective whole (based on something you have been trying)
- Share knowledge to achieve goals (based on observations or an organizational goal)
- Build capacity at your site or within your organization-Building leadership and Cross-training



Microlab Protocol

- We will use three questions to discuss our topic.
- Each person will have one minute to respond to the question.
- No one else talks or asks questions when it is someone else's turn.
- Speak from your own experience and knowledge.
- Say "I" when you are speaking about yourself.
- Stay focused on the question.
- Listen and discover, rather than give advice.



Microlab Protocol- Modification

- Round 1- Our presenting team will model
- Round 2- We will have a poll
- Round 3- We will have you type in the chat



Microlab Questions

- Describe a time when you were part of a learning community. What made it so?
- What could be some barriers to a community of practice style of learning? *take the poll
- What areas of your work can you start facilitating a CoP to build capacity and community? *enter in chat



Thank you for your participation!

Melissa Wheelahan, M.A.
mwheelahan@ocde.us

[Bit.ly/InteractCoP](https://bit.ly/InteractCoP)

School Reform Initiative- schoolreforminitiative.org



[#interactCLASSsummit](https://twitter.com/interactCLASSsummit)