

2020 INTERACT

Mecklenburg County, NC: Locally-financed Integrated Coaching Model to Boost Public Pre-K Child Outcomes April 21, 2020

Creating Opportunity: An Action Plan for Early Childhood Education

A Report by the Mecklenburg County Early Childhood Education Executive Committee
September 26, 2017



Implementation Progress Report: Mecklenburg County Action Plan for Early Childhood Education, 2019 Update

A Report by the Mecklenburg County Early Childhood Education Executive Committee
February 2019



Learning Objectives



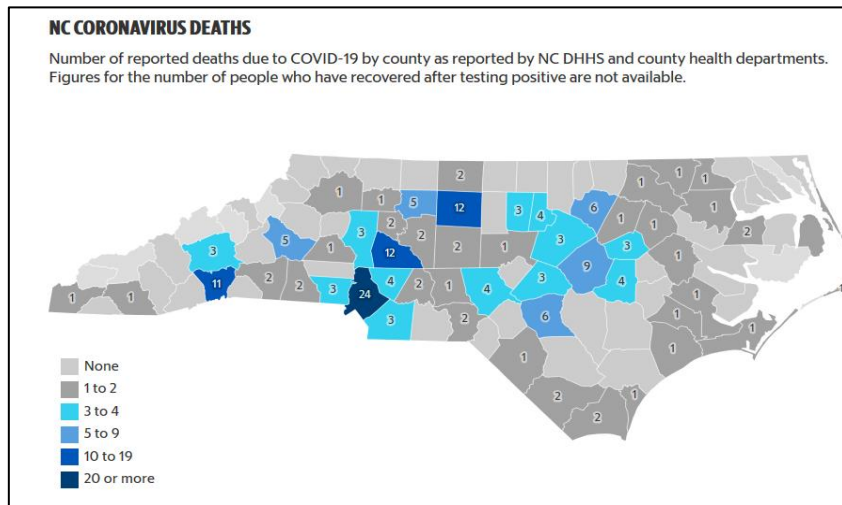
- 1) Community strategies for local innovation
- 2) Integrated coaching (Supporting Creative Curriculum, Teaching Strategies Gold, and CLASS)
- 3) Building Blocks: Ideas that can be brought home



Mecklenburg County & COVID-19

As of April 18,

- More than 6,000 cases of COVID-19 throughout NC; 172 deaths
- Mecklenburg County: the most heavily impacted county (1,136 COVID-19 cases, 24 deaths)
- Estimated COVID-19 peak: June 2020



Source: The Charlotte Observer, based on data reported by the NC DHHS and county health departments.
<https://www.charlotteobserver.com/news/coronavirus/article242101686.html>

Mecklenburg County & COVID-19

MECK Pre-K is a mixed-delivery model. The program operates in community child care centers, mostly following NC Pre-K rules.

Child Care Market Stability

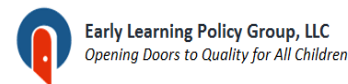
- Subsidized child care payments for March, April, May are based on enrollment, not attendance. Co-pays are waived for April & May (i.e., the state will pay)
- New subsidy support for essential personnel up to 300% of FPL (at increased \$ rates)
- NC Pre-K (and MECK Pre-K) payments will continue for the program year (for open & closed centers)
- Monthly bonus payments to all child care employees working on site at open programs

Mecklenburg County: Local Innovation Using CLASS

- In 2014, a Harvard University/UC Berkeley study ranked Charlotte 50th of 50 major cities – no upward mobility
- Divisions by race, by income
- Born poor, stay poor.

The Business Community said NO.

- CELC gave \$500,000 - a 2-phase study
- The County Commissioners passed a resolution (Access to ECE B-5)
- County Manager appointed an ECE Committee, an RFP for support issued



Business Leaders & Commissioners – Accountable Investments

In 2017, the Executive Committee:

- Met 13 times, including 3 half-day retreats
- Examined the County ECE landscape (e.g., less than 1/3rd of 4 year-old children had access to public pre-k, long child care subsidy waiting list)
- Considered opportunities, challenges, and costs
- Discussed lessons learned from other communities
- Developed recommendations

Solicited Community Views:

- County-wide Poll,
May 16 – June 13, 2017
- 12 focus groups, (2 in Spanish)
March – August 2017
(business leaders, parents, providers, faith community, higher education, TA providers...)

Business Leader Drivers:

- **Accountable investments**
- **Public transparency**
- **Talent Development (the ECE workforce)**

Next Steps, the Road to CLASS

In June of 2018,

- The County Board voted to increase property tax rates by 3/4s of a penny (raising about \$9 million – 1st year of voluntary, universal pre-k for 4 year-olds)
- Funds were dedicated to opening 33 public pre-k classrooms for the 2018-2019 school year
- \$6 million to reduce the child care subsidy waiting list for B-5



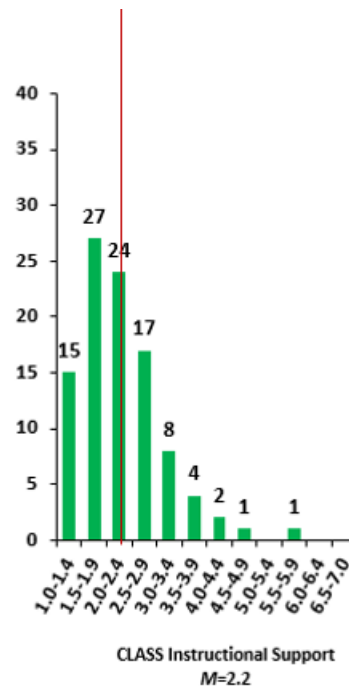
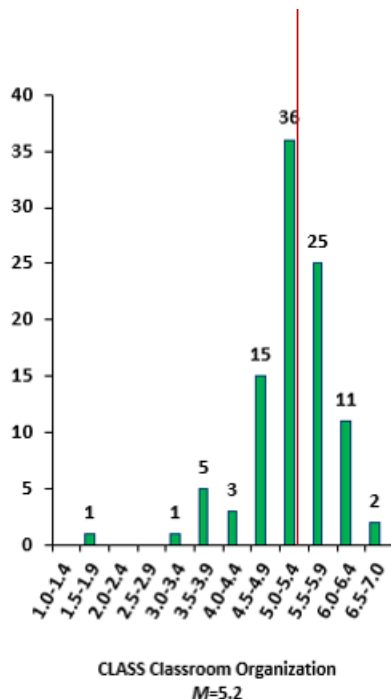
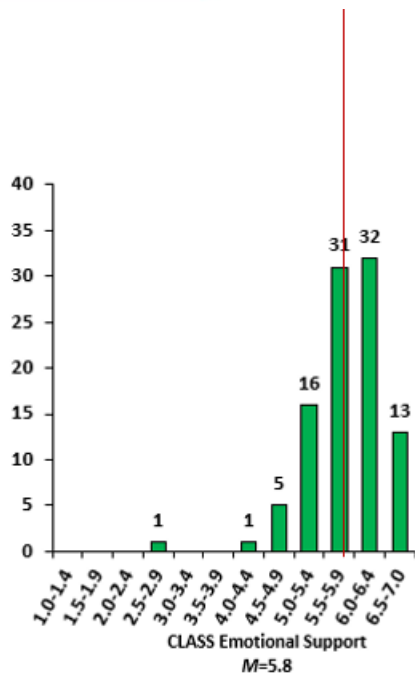
Mecklenburg County & COVID-19

Mecklenburg County understands:

- Better teacher/child interactions lead to greater child outcomes/gains

Studies show NC Pre-K kids through 8th grade (no “fade-out”)

- Proficiency gaps remain
- Mecklenburg County wanted greater gains
- CLASS became the core of MECK Pre-K



1st Year & 2nd Year Lessons Learned

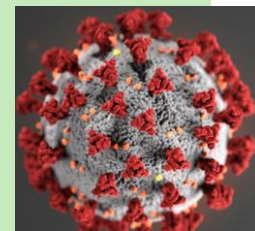
2018-2019 School Year (1st Year)

- \$ approved in June, classrooms opened in 3 waves in the fall (33 classrooms)
- Decided on soft CLASS launch
 - Primer training
 - CLASS observations
- On-boarding of coaches slower than anticipated (local PD reqs addressed)
- Brought on extra support for coaches for development of PD plans based on scores
- Extra push for myteachstone use
- Timing of MMCI coach training (Making the Most of Classroom Interactions)

2019-2020 School Year (2nd Year)

- 69 classrooms (36 new)
- Continued integrated training & coaching approach
- Primer training
- MMCI led by local coaches
- CLASS observations (fall & spring)
- PD plans by local coaches
- Full expected use of myteachstone
 - Continued coach support
- Integrated CLASS/Teachstone

Tool: <https://info.teachstone.com/hubfs/blog-attachments/CLASS%20Crosswalk.pdf>



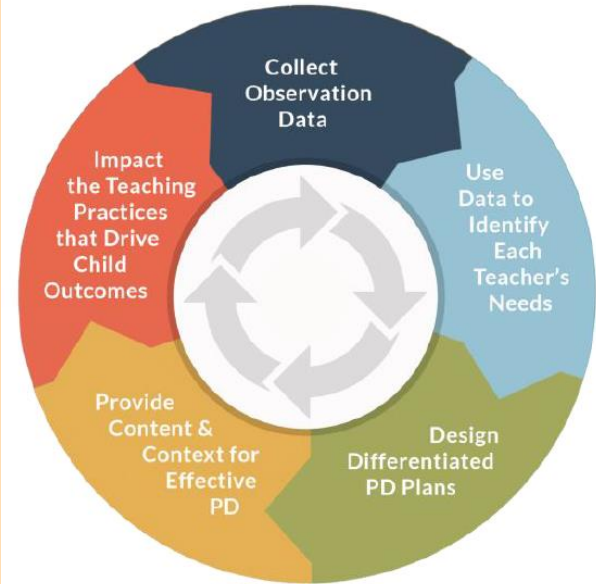
**COVID-19
Impact**

Lessons Learned: Keys to Success

Communication!

- Biweekly calls really important- coordinate & integrate
- MMCI critical upfront & ongoing. (Next year!)
- Bring in extra support if needed –
 - It's not a checklist. It's about changing behavior.
- Sharing information key: fidelity scores with Creative Curriculum & CLASS baseline scores – plan together.
- Coordinate scheduling of onsite visits (e.g., for Mecklenburg-coaches – Creative Curriculum, TS Gold & and CLASS; NC B-K licensure support)
- Director buy-in & leadership on accessing myteachstone
- Ongoing use of Integrated Tool:

<https://info.teachstone.com/hubfs/blog-attachments/CLASS%20Crosswalk.pdf>



Concluding Thoughts

- Local leadership is critical, including the business community
- A viable funding stream is needed
- Talent development = workforce investment
- Integrated coaching is work, but makes sense – CLASS is at the core
- Children are the beneficiaries.



Be nimble to meet post COVID-19 needs!

Concluding Thoughts

Thank you for your time and the opportunity to share the Mecklenburg County ECE project with you.



Tameika Leslie,
Tameika.Leslie@mecklenburgcountync.gov

Cindy Cisneros, Ccisneros@ced.org

Grace Reef, GraceReef2013@gmail.com